



Simplify Web Load and Performance Testing with LoadComplete

Realistic Load Generation On-Premise and in the Cloud

LoadComplete™ is a comprehensive load testing software tool designed to test your websites and web applications. With LoadComplete, you can identify and pinpoint serious bottlenecks early, inside or outside your network, at both the application and server levels. Furthermore, using our remote agent technology or direct integration with Amazon EC2, you can easily generate load from the cloud to cost effectively run and manage both on-premise tests as well as large scale cloud tests. LoadComplete lets you quickly scale testing to realistically simulate user interactions and provides great support to help you every step of the way, all at a price that won't break the bank.

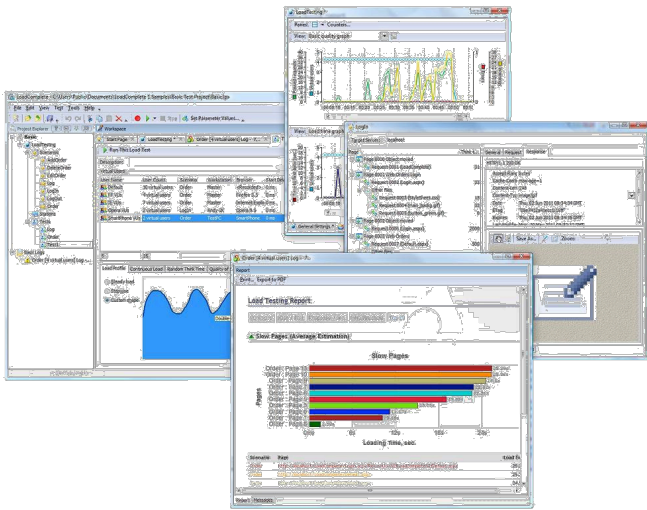
Key Features of LoadComplete

- ◆ Automated recording of browser-based user scenarios without scripts
- ◆ Custom load shaping to create detailed visitor profiles to follow
- ◆ Dynamic simulation of visitor data and traffic patterns via data wizard
- ◆ Configurable think times mimic human pausing during page views
- ◆ Automatic or custom test data generation instantly diversifies test cases
- ◆ Smart server side monitors capture infrastructure statistics
- ◆ Identify request dependencies and use detailed reports like comparison reporting to reduce need for manual analysis
- ◆ Support for 2,000 virtual users per agent which helps you reduce load testing hardware cost

Whether you are a novice or experienced at web load testing, LoadComplete's easy-to-use graphical interface, makes load testing real user scenarios faster and more efficient. You can spend more time analyzing the results than you do configuring the tests or building tests by hand. And, TestComplete users benefit even more, with the ability to use the test scripts they designed for automation testing, in a familiar work flow and testing environment.

Test Scenarios in an Instant

LoadComplete provides self-service set up and execution of test scenarios, so you can customize your load profiles to meet your testing goals, including steady load, ramp-up, and custom load shaping. Our data parameterization wizard can quickly create key data test parameters so you don't have to. Quickly create diverse test scenarios that simulate real time user activity without complex coding and development by dynamically replacing variables in search or product fields.



Configurable Quality of Service

You have standards. So should your load-testing tool. LoadComplete lets you apply your expected Quality of Service metrics to any load tests, define success parameters, and set performance thresholds that are tied to the real user experience and the business goals for the application.

Smart Server Side Monitoring

LoadComplete's advanced server side monitors measure disk drive, network and CPU performance to ensure your infrastructure is up to the task and demands of your web site or web application. Capturing server metrics alongside application metrics helps to identify hardware or software deficiencies that may require upgrading, reconfiguring, or virtualization prior to deployment.

Detailed Test Reports

LoadComplete delivers thorough test reports, immediately upon test completion, for in depth performance analysis. Detailed real time graphical reports with response time, throughput and error metrics lets you identify the source of hardware or software issues, as well as problems that may occur with third party integrated vendors.

Test Management and Traceability

SmartBear offers a comprehensive and scalable test management solution for teams of all sizes, using QAComplete, LoadComplete, and Web together. Start with automated test execution and monitoring test status, extend the system to include manual testing and full traceability of requirements, and then wrap it up with load testing the strength of your application by putting it under the real world normal and extreme stress it experiences on a daily basis.

When Should We Load Test?

In one word...often. Load testing gives you a first-hand view of your end users' daily experiences and interactions, so you can proactively identify issues that can have a serious impact on the quality of service you deliver. It is a critical tool in your kit to understand how much stress your Web application can handle under adverse conditions, from overtaxing your infrastructure due to a spike in usage or changes in equipment, to slow browser performance under high traffic conditions.

Here are a few examples of when you can benefit from load testing:

- ◆ After making hardware and configuration changes
- ◆ When new features are added to beta environments
- ◆ Prior to new Website, application, or feature launch
- ◆ Upgrading or virtualization of infrastructure
- ◆ Addition of third party or partner applications or tools
- ◆ Mergers and acquisitions of technology assets
 - ◆ Special events or promotions rollout
 - ◆ Seasonal offers
 - ◆ Super Bowl ads
 - ◆ Advertising programs
 - ◆ World news
 - ◆ Weather broadcasts

About SmartBear Software

More than one million developers, testers and operations professionals use SmartBear tools to ensure the quality and performance of their APIs, mobile, Web and cloud-based applications. SmartBear products are easy to use and deploy, are affordable and available for trial at the website. Learn more about SmartBear, the company's award-winning tools or join the active user community at www.smartbear.com, on [Facebook](#), or follow us on Twitter [@smartbear](#) or [Google+](#).

